

Datasheet Low Frequency Monopole



Description

The low frequency monopole generated a omnirectional sound field in a bandwidth of 20Hz up to 500Hz. An optional reference particle velocity sensor is used to provide a known volume velocity. Then the source can be used for reciprocal measurements. Without the refernce sensor the source can be used for low frequency surface impedance measurements.

Use

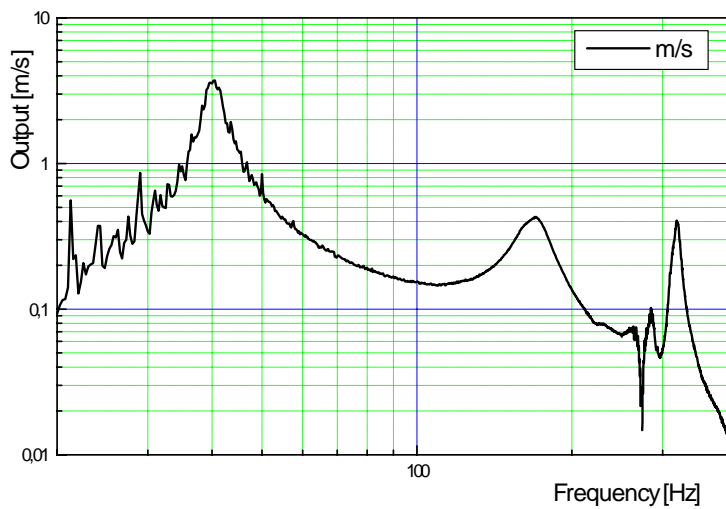
An omnidirectional low frequency sound source

For low frequency reciprocity measurements (a high level reference velocity sensor is required)

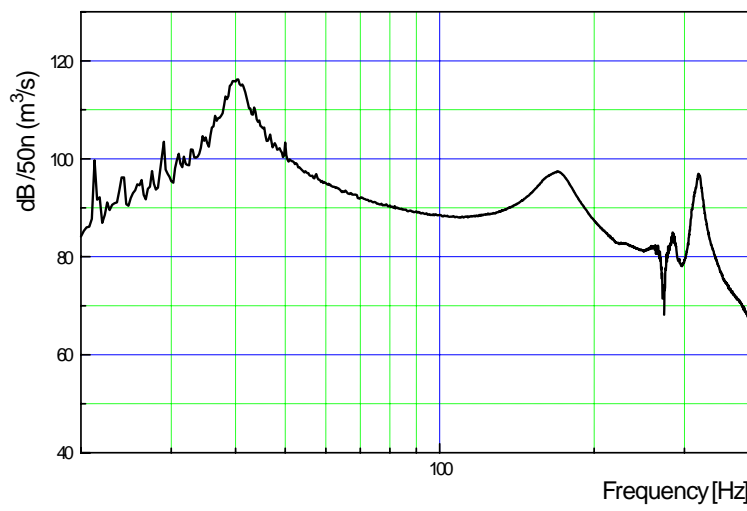
for low frequency surface impedance measurements

Specifications

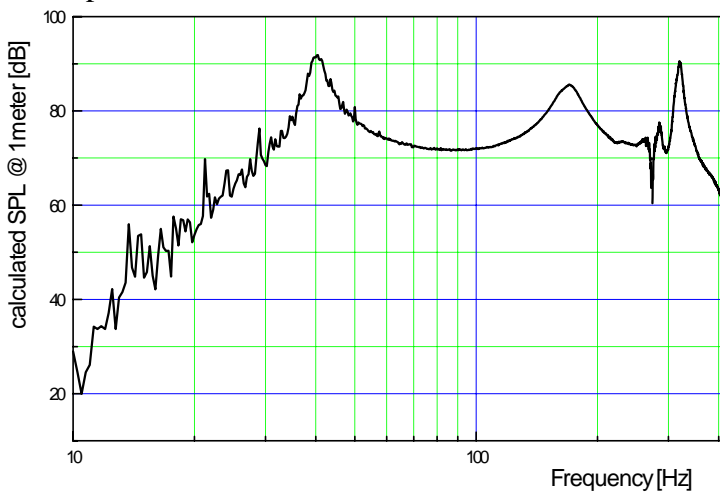
Maximal velocity at the output:



Volume velocity in dB ($20 \log(Q/50n)$)



Sound pressure level at one meter:



Dimensions

